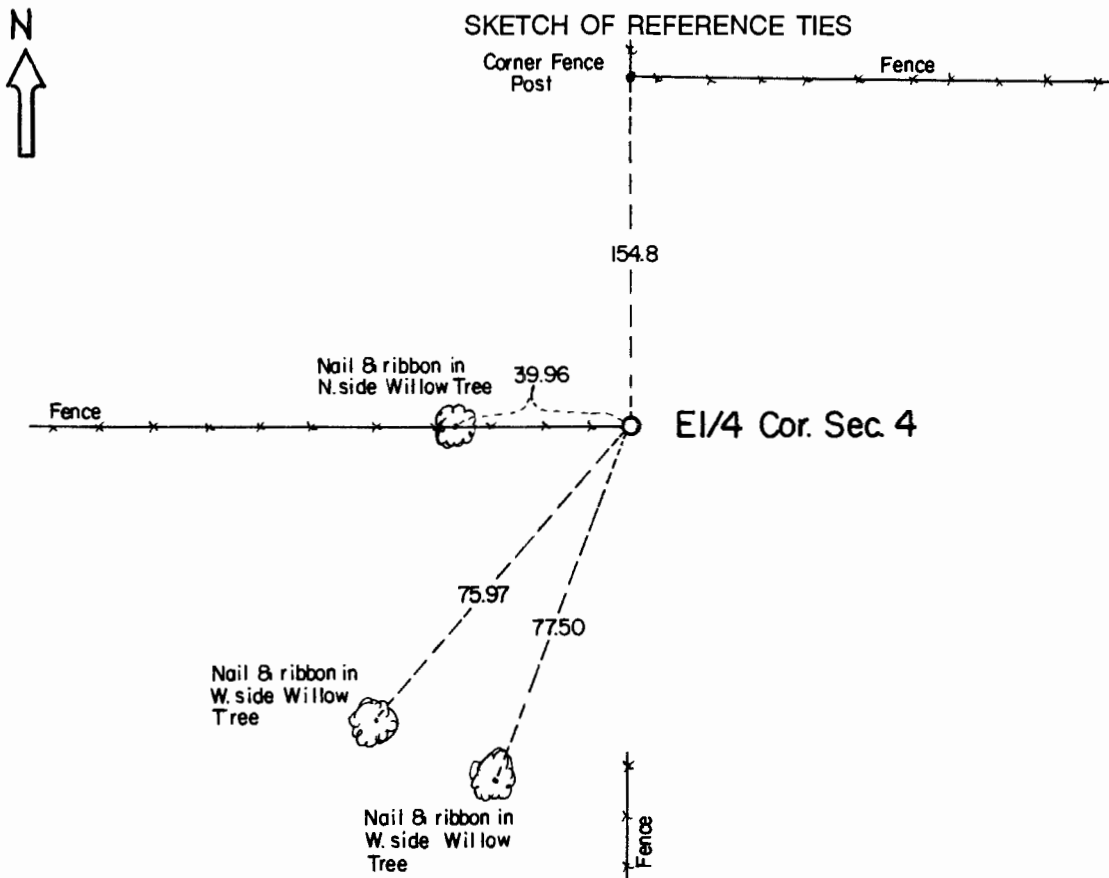


CERTIFICATE OF LOCATION OF GOVERNMENT CORNER

East Quarter Corner of Section **4** , Township **108** , Range **41** 5th P.M.
STATE OF MINNESOTA, County of Murray.

Statement: Aug. 17, 1989 - Found a 24 inch x 28 inch x 20 inch stone. Placed a Mn/DOT Cast Iron Monument with a stone alongside.



Statement of evidence relative to this corner location is on the back of page.

I hereby certify that this document and the data contained herein was prepared by me or under my direct supervision and that I am a duly Registered Land Surveyor under the laws of the State of Minnesota.

Duane A. Bonnema Nov 6, 1989
Duane A. Bonnema Date

Minnesota Registration No. 14895

OFFICE OF THE COUNTY RECORDER
COUNTY OF MURRAY **NOV 15 1989**

I hereby certify that this document was filed in the County Recorder's office at ____ M. on the ____ day of ____ A.D., 19 ____

County Recorder James V. Johnson

By _____, Deputy
DOCUMENT NO. _____

East Quarter Cor. Sec. 4 T108N-R41W

Statement:

- September 1861* *Original Government Land Office Surveyor L. G. M. Fletcher records in his field notes, "set quarter section post, built mound with trench pits, charred stake, per instructions."*
- Aug. 22, 1899* *J. W. Woolstencroft, County Surveyor, records in the County Surveyor's Record Book, page 90, "Government Mound and pits" while he was doing survey work in Section 3.*
- Aug. 17, 1989* *Duane A. Bonnema, LS Reg. No. 14895, found a 24 inch x 28 inch x 20 inch Stone half buried in the ground. The Stone fits the existing fence lines to the West and the South and is within 1.5 feet of the single proportionate measure position. A Minnesota Department of Transportation Cast Iron Monument was placed at the Corner position and the stone was left on the South side of the Cast Iron Monument.*